



Public Notification Package

45.7m proposed Telecommunication Tower
in the City of Moose Jaw

Dear Resident of the City of Moose Jaw,

As more Canadians rely on wireless phone services for personal security, convenience, and business, SaskTel is required to respond to the demands of our customers by completing network expansion and improvements.

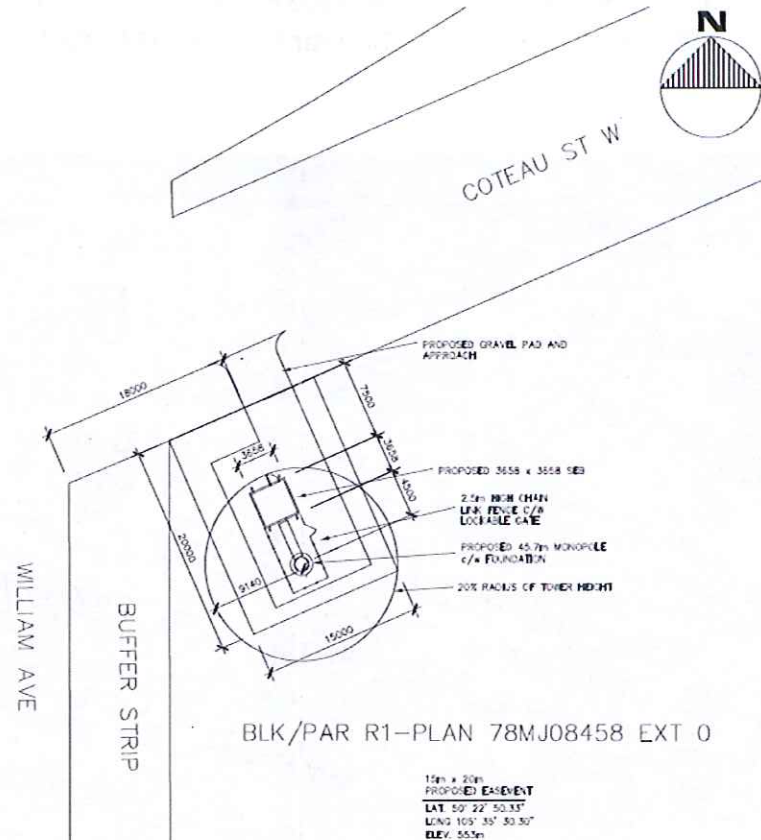
SaskTel proposes to design and construct a new digital cellular tower and small equipment building to improve the wireless coverage and capacity demand in the Southwest area of Moose Jaw. This will improve coverage in areas where signal strength is marginal thus providing better wireless voice and data services.

This notification package will provide you with pertinent details about the proposed installation.

If you have any questions or comments, please direct them to our attention and we will be certain to respond promptly to you.

Proposed Tower

In our search for antenna system solutions in your community, we reviewed the suitability of other existing infrastructure (towers, rooftops, and taller structures) within the 500m search ring radius. SaskTel determined that no other antenna structures to co-locate on, or any buildings 30m in height and suitable for roof top antennas, were found within the area that met the wireless demands.



Other Infrastructure

The location and the height of this new tower maximizes the network coverage area, which cannot be achieved by co-location on any existing infrastructure. SaskTel welcomes any co-location opportunities by other carriers.

Proposed Location and Description of the Antenna System

The proposed communication facility will consist of a 45.7m monopole and building complete with an anti-climbing device and chain link fence enclosing the tower to guard against any unauthorized access.

Geographic Coordinates

Latitude: 50° 22'50.33"N

Longitude: 105°35'30.30"W

Legal Description

Surface Parcel# 104515051

Blk/Par R1, Plan 78MJ08458 Ext. 0



A photosim of the proposed monopole.

Location

The proposed tower will be located at the corner of Coteau St. W. and William Ave. in the City of Moose Jaw.

Approximate Measurements:

Monopole Height: 45.7 m

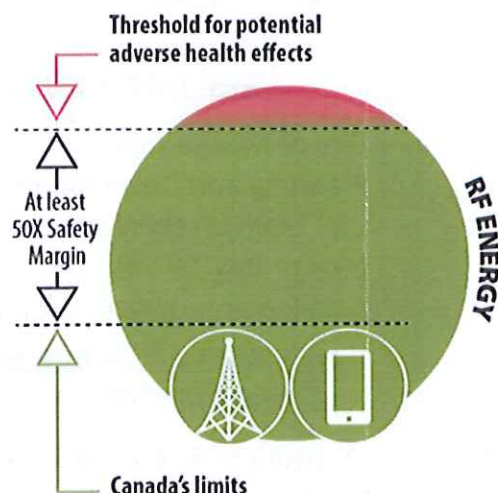
Monopole Base: 1.8m wide **Monopole Top:** 1.2m wide

Antenna: 6 antenna per level with 2 levels mounted at the top; antennae are 2437mm x 498mm x 197mm in size.

Health Canada Safety Code 6

The operation of all radio frequency equipment in Canada is regulated by Health Canada Safety Code 6 – *Limits of Human Exposure to Radiofrequency Electromagnetic Energy in the Frequency Range from 3 kHz to 300 GHz*.

Health Canada's Safety Code 6 has large safety margins built in to provide a significant level of protection for the general public and people working near RF sources.



For additional information pertaining to Health Canada's Safety Code 6 guidelines please refer to the following website:

<http://www.ic.gc.ca/towers>

Saskatchewan Telecommunications attests that the radio installation described in this notification package will be installed and operated on an ongoing basis to comply with Health Canada's Safety Code 6, as may be amended from time to time, for the protection of the general public including any combined effects of nearby installations within the local radio environment.

Environmental

The *Impact Assessment Act (IAA)* (sc2019c-28,s1) ensures environmental and social impacts of designated projects are understood and addressed prior to commencing. The *Physical Activities Regulations* (SOR/2019-285) provides a project list for which assessments are required. The objective of the project list is to capture major projects with the greatest potential for adverse effects in areas of federal jurisdiction related to the environment, while also providing certainty and clarity as to which projects are subject to the Impact Assessment.

The telecommunications tower and antenna system installation described in this notification package does not constitute a designated project as defined in the *Physical Activities Regulations*, nor is it incidental to a physical activity or project designated under the IAA and is not located on Federal Lands; therefore, an environmental assessment under the IAA 2019 is not required.

Tower Structure

Saskatchewan Telecommunications attests that the tower installation described in this notification package will be engineered, constructed and maintained in accordance with Canadian Standards Association specification S37-18 *Antennas, Towers and Antenna-Supporting Structures*, as amended from time to time, for the protection of the general public respecting good engineering practices including structural adequacy.

All drawings and final designs will be reviewed and stamped by a consulting engineer licensed by the Association of Professional Engineers & Geoscientists of Saskatchewan.

Local Land – Use Requirements and Contact Information



Land Use Requirements

The site will be constructed as per local land-use requirements and policies. If the Land Use Authority does not have a consultation policy for tower siting protocols, SaskTel will follow the Innovation, Science and Economic Development Canada *Radiocommunication and Broadcasting Antenna Systems Policy* (CPC-2-0-03 Issue 6 dated July 2022).

Transport Canada

The site will meet necessary aeronautical safety regulations as per Transport Canada and Nav Canada's requirements. Prior to construction, SaskTel will submit all required clearances from the authorized agencies and until such approvals are finalized, the proposed tower will consider to be without obstruction marking and lighting pursuant to the *Canadian Aviation Standard 621*. For further information, please refer to Transport Canada Aviation Regulations (SOR/96-433).

Additional Information

General information relating to antenna systems is available on the Innovation Science and Industry Canada Spectrum Management and Telecommunications website at:

<http://www.ic.gc.ca/towers>

Public Notice

SaskTel is considering constructing and installing a 45.7m monopole and small equipment building at the corner of Coteau St. W and William Ave. on Surface Parcel # 104515051 being Blk/Par R1, Plan 78MJ08458 in the NE1/4 25-16-27-W2M, Ext. 0 within the City of Moose Jaw. This structure would provide enhanced wireless communication services in the Southwest area of Moose Jaw.

Public comments can be directed to SaskTel Corporate Services Real Estate within 30 days of this notice.

**SaskTel Corporate Services Real Estate
10th Floor
2121 Saskatchewan Drive
Regina, SK S4P 3Y2
(306) 777-1199**

This notice will be published on May 3, 2023, in the Moose Jaw Express newspaper.



**Closing date for submission
of written public comments
will be June 1, 2023.**

Written comments must be submitted by mail directly to:

SaskTel

Comments to SaskTel can be directed to:
Scott Land & Lease Ltd.
Jordan Wu, BBA, Land Agent
(306) 790-4375
Email: jwu@scottland.ca

Land Use Authority

City of Moose Jaw
Planning and Development Services
228 Main Street North
Moose Jaw, SK S6H 3J8
Email: planning@moosejaw.ca

Innovation, Science & Economic Development Canada Office

Innovation, Science & Economic
Development Canada
Room 600
1945 Hamilton Street
Regina, SK S4P 2C7

Attention: Michael Wawryk
Manager, Spectrum Operations

Scott Land & Lease Ltd.
1460-2002 Victoria Avenue
Regina SK S4P 0R7

Attention: Jordan Wu
Phone: (306) 790-4375
Email: jwu@scottland.ca